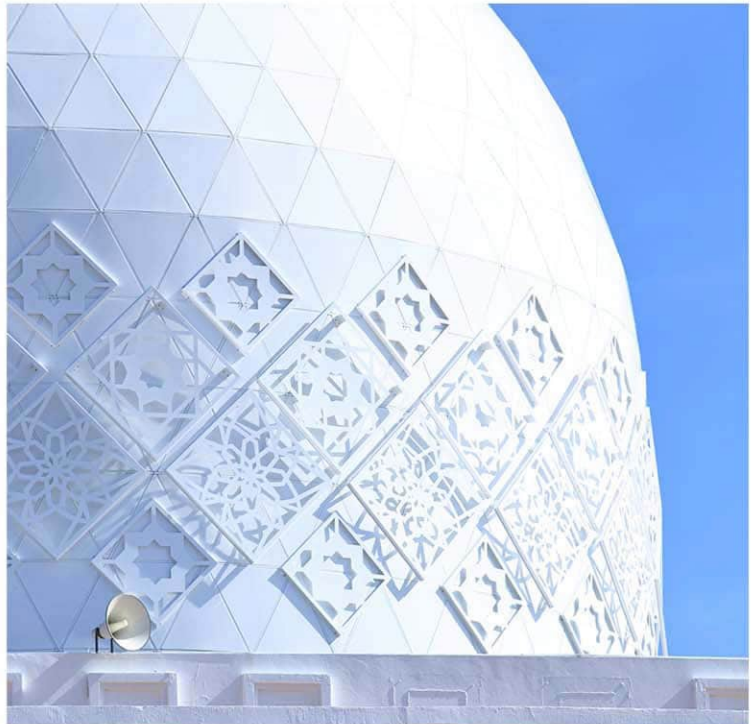




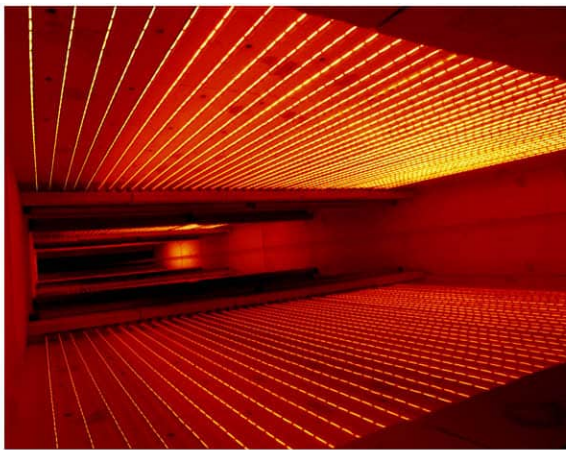
ROOFING | WALL CLADDING | LOUVRES | CEILING | TRUSSES | SCREENS & FACADES

PRODUCT CATALOGUE





THE 1ST COLOUR COATING LINE IN ASIA PACIFIC FEATURING INFRA-RED CURING TECHNOLOGY



INFRARED

- Zero Pinholes
- Smooth Finish
- Consistent Paint Thickness

Colourcoil Industries is a well established Malaysian owned company specializing in the manufacturing of prepainted steel coils (i.e. color coated steel coils). We are the first in Asia Pacific to feature the latest State-of-the-Art infra-red coil coating technology producing high quality prepainted metal products, catering to the wide applications in the building and construction industry.



LARGEST MANUFACTURER OF ROLLED ALUMINIUM PRODUCTS IN MALAYSIA AND A LEADING SUPPLIER IN THE ASIA PACIFIC REGION WITH A STRONG GLOBAL PRESENCE



Aluminium Company of Malaysia Berhad (ALCOM) is the largest manufacturer of rolled aluminium products in Malaysia and a leading supplier of aluminium rolled products in the Asia Pacific region.

Excelling in fin stock used in heating and cooling systems, ALCOM is a pioneer in the field, with its unparalleled manufacturing capacity, forward-thinking technological prowess and cutting-edge research and development operations.

- Lightweight
- Ductility
- Recyclability
- Corrosion Resistance
- Reflectivity
- Guarantee



CONTENTS



About Us

- ▶ Company Background.....02
- ▶ Vision and Mission.....03
- ▶ Our Philosophy.....04
- ▶ Products and Services.....06

Roofing

- ▶ Metal Roof IM-Seam™.....07
- ▶ Metal Roof IM-Clip™.....11
- ▶ Metal Roof IM-Deck™.....15
- ▶ Metal Roof IM-Span™.....17
- ▶ Euroshingle™.....18

Wall Cladding

- ▶ Waldeck™ WD215.....20

Ceiling

- ▶ Europanel™ (EP100/200 & EP200X).....21
- ▶ Eurowave™.....23

Paint Systems

- ▶ Specifications.....24

Screens & Facades

- ▶ Screens & Facades.....26
- ▶ Cityvent™.....27
- ▶ Louvres.....28

Trusses

- ▶ IM-Truss™ & IM-Truss™ Lite.....30



BEACON OF A NEW DAWN

In 2013, we embarked on our innovative journey to bring forth a renewed approach towards metal roofing for buildings across Sarawak.

We understand what strong roofs and facades are meant to do – to help you weather any storm. While functionality takes precedence, a stylish touch resonates with the inner artist.

With COLOURCOIL® prepainted coil as our signature, we focus on roll forming of metal roofing, ceiling, wall cladding and louvres along with the design and installation of both lightweight trusses and mild steel fabrication. Since then, we have added façade to our main business.

We continue to grow for you, and with you.



VISION

To be the leading supplier of metal roofing and facades across Sarawak; known for superior functionality and aesthetics through innovative processes.

MISSION

Guided by the principles of innovation that convert concepts into reality, we aim to deliver optimum Client satisfaction through unparallel excellence in quality.



ROOFS AND FACADES ARE NOT MERE ORNAMENTS, THEY ARE THE CONDUIT OF EXPRESSION

Just like you, we marvel at the juxtaposition of imagination and reality.

As a brand, we pay homage to the inevitability of nature and design collision.

Together, we can sail past the walls of conventionality and experience the outburst of freedom. Freedom of expression.

INTUITIVE DESIGN

Design the right environment, and open up the louveres to possibilities.

We introduce to contemporary Sarawak; the locus of our business, the merge of classic architectural influences and modern silhouettes.

Aesthetics of the future meets superior functionality.

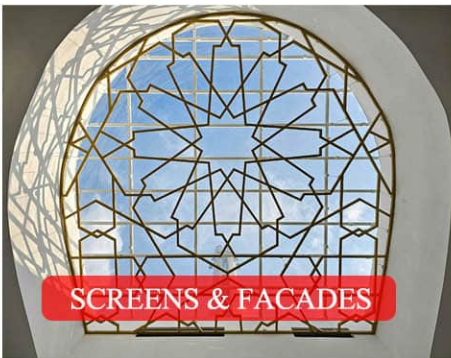




ROOFING



WALL CLADDING



SCREENS & FACADES



CEILING



TRUSSES

RANGE OF SERVICES

- ▶ Design and installation of light weight trusses
- ▶ Design and installation of mild steel structures
- ▶ Design and installation of architectural screens
- ▶ Design and installation of Pre Engineered Building (PEB)



AMPELITE
TRANSLUCENT ROOF



PRE ENGINEERED
BUILDING (PEB)

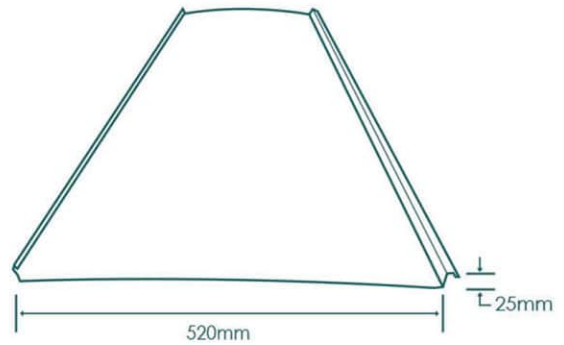
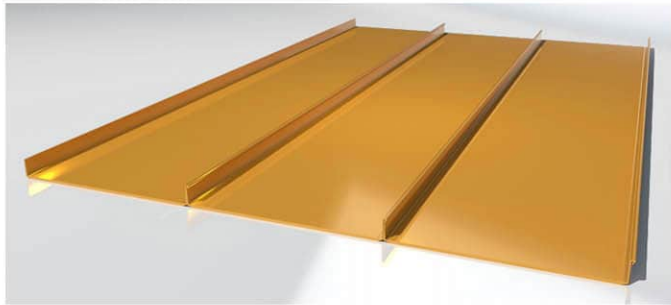
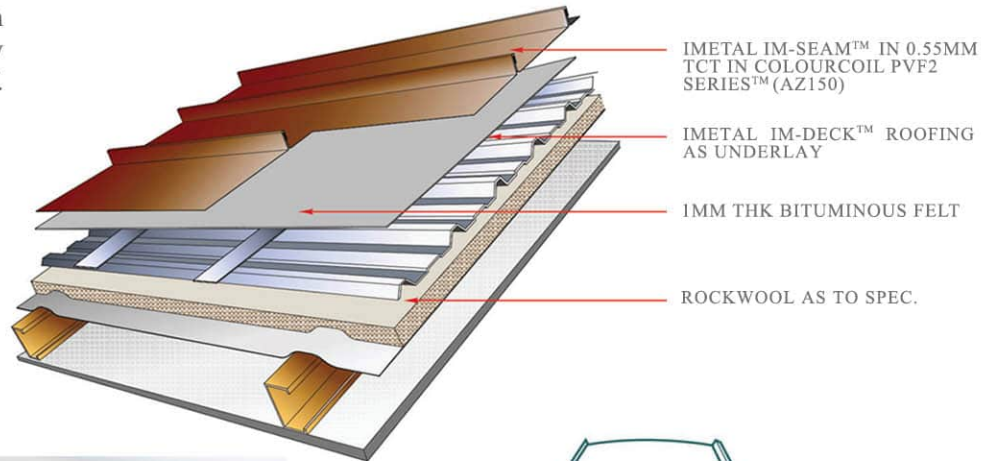


DECRA ROOF



ROOFING | IM-SEAM™

Interlocking seam profile with tapering and curving flexibility to deliver superior aesthetic roof.



| PROFILE | THICKNESS | PAINT SYSTEM | COATING SYSTEM |
|-----------------|--------------------------|--|------------------|
| IMETAL IM-SEAM™ | 0.63MM TCT 0.55MM TCT | DUOTONE PVF2 SERIES™ METALLIC PVF2 SERIES™ PVF2 SERIES™ KRISTALMATT SERIES™ | AZ 200 AZ 150 |
| | 0.8MM TCT | ALUMAX PVF2 SERIES | AL3105 H24 |

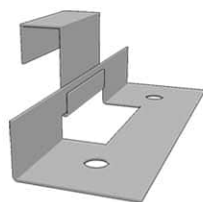
Fasteners

All fastening screws must conform to AS3566 - Class 3. They are to be hexagon headed and for roofing must be used with sealing washers. For connecting to purlins or top hats use:

Clips for IM-SEAM™



Fixed Clip



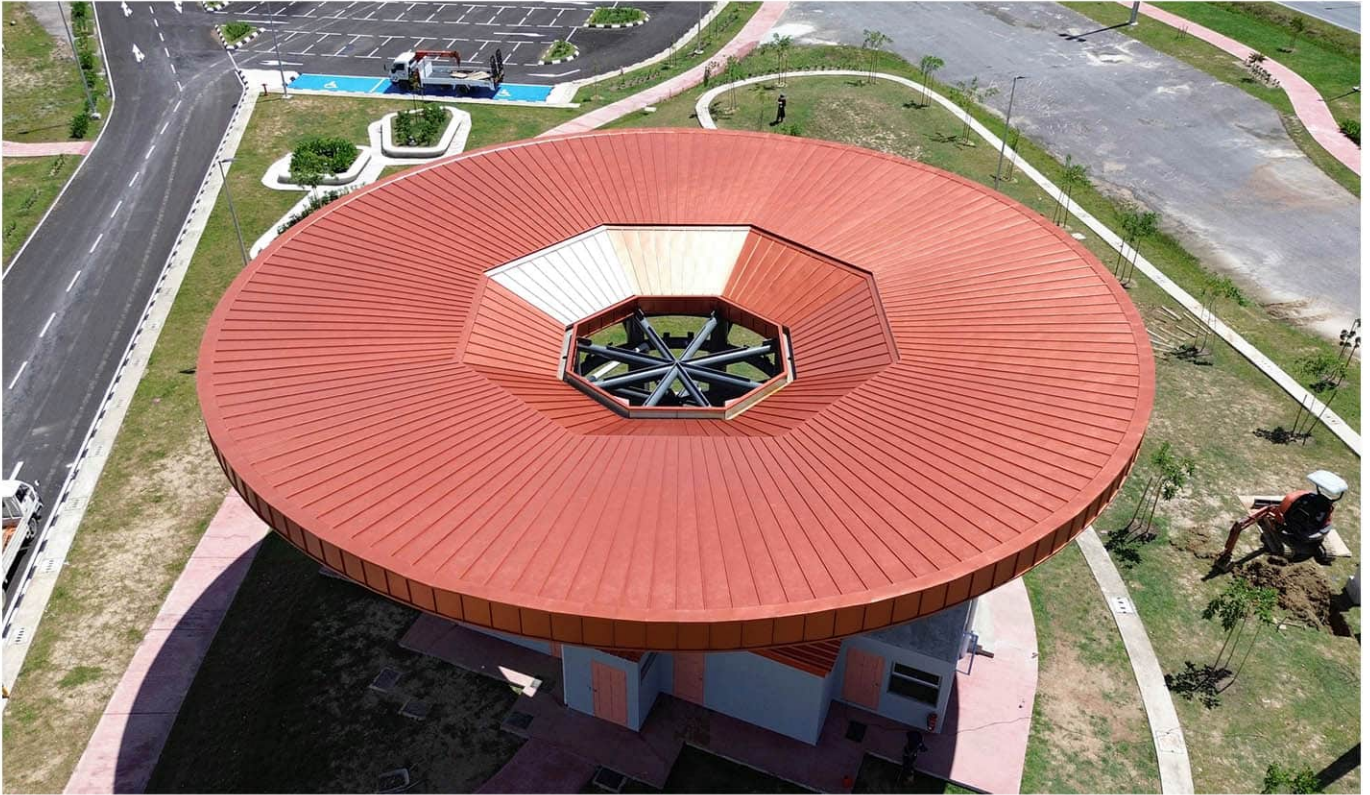
Sliding Clip

PRODUCT BENEFITS

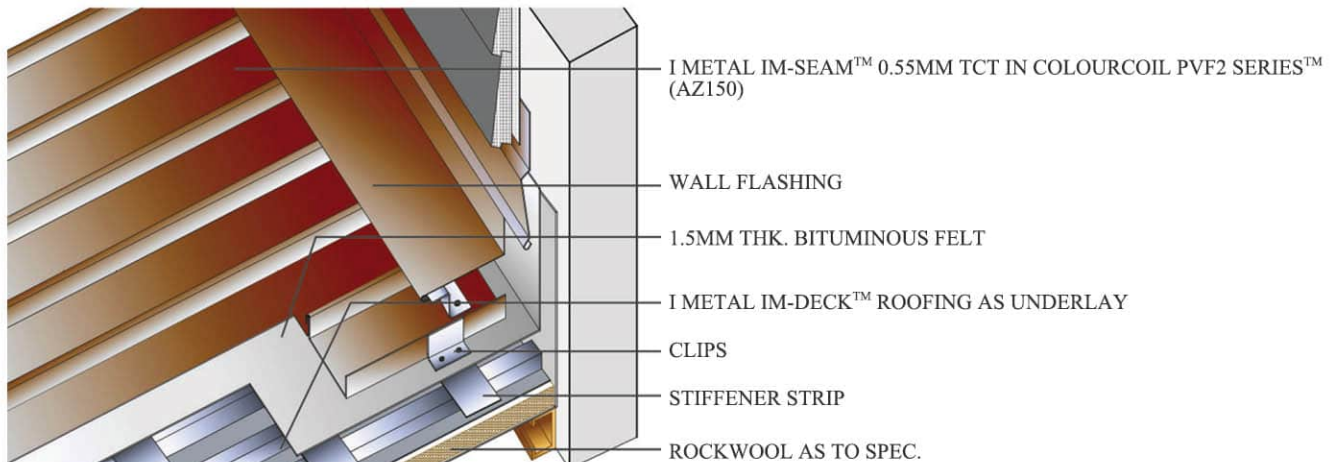
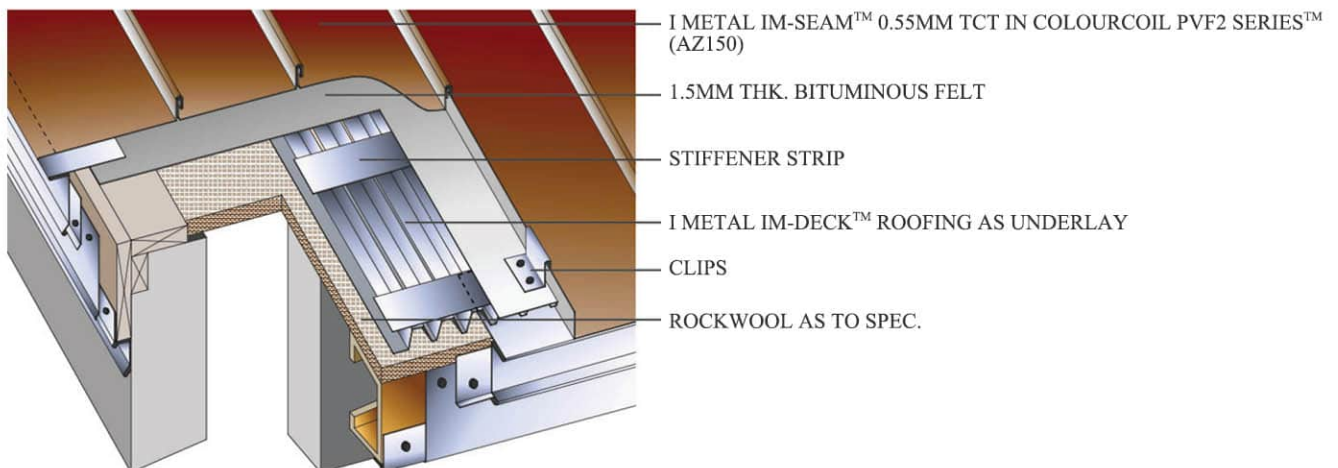
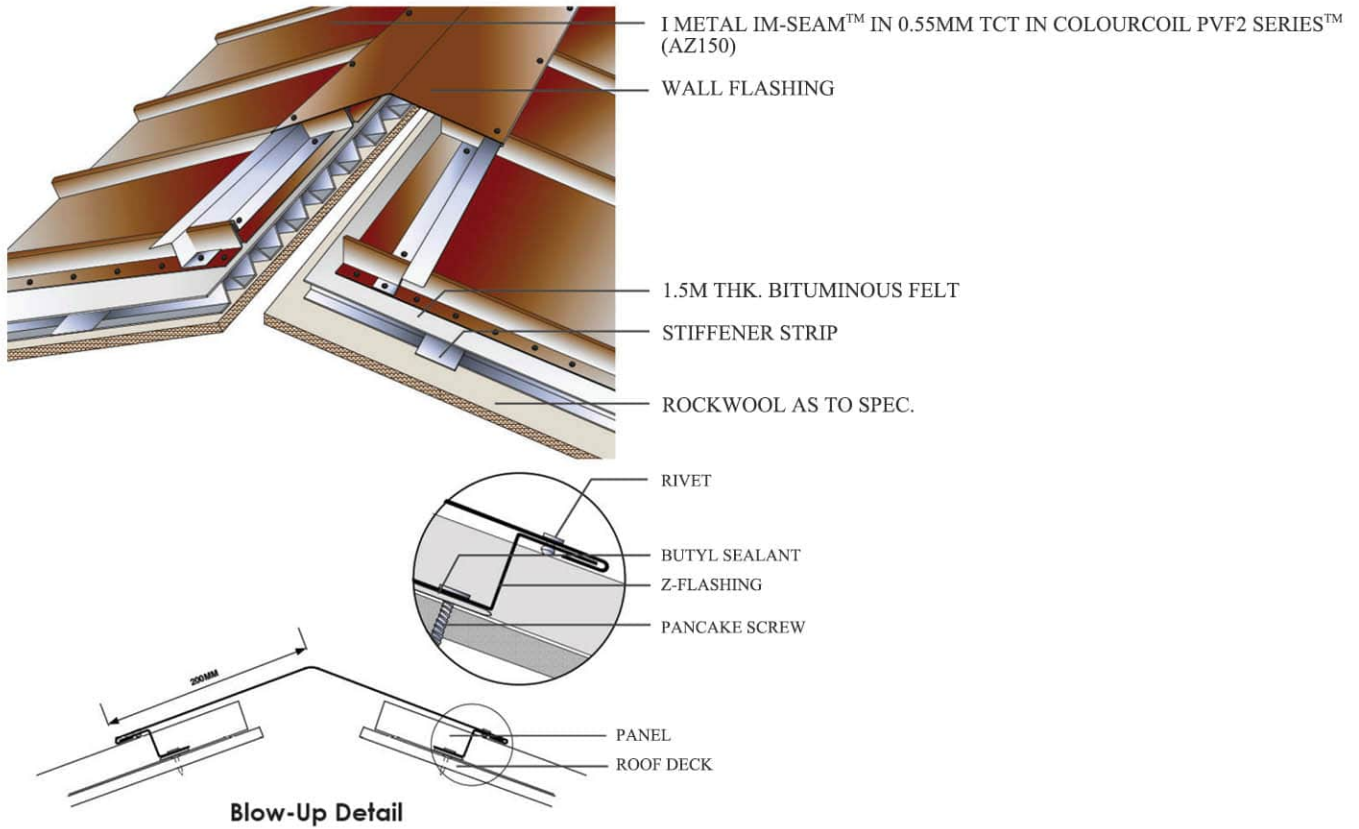
- ▶ Trendy, wide and flat profile providing premium roof expressions
- ▶ Ability to concave and convex curve with tapering to provide freedom for roof forms and shapes
- ▶ Infrared cured paint system for better paint performance and smoother surface finish



TOP TO BOTTOM:
Pasar Tamu, Lawas | Masjid Darul Husna, Sibujaya



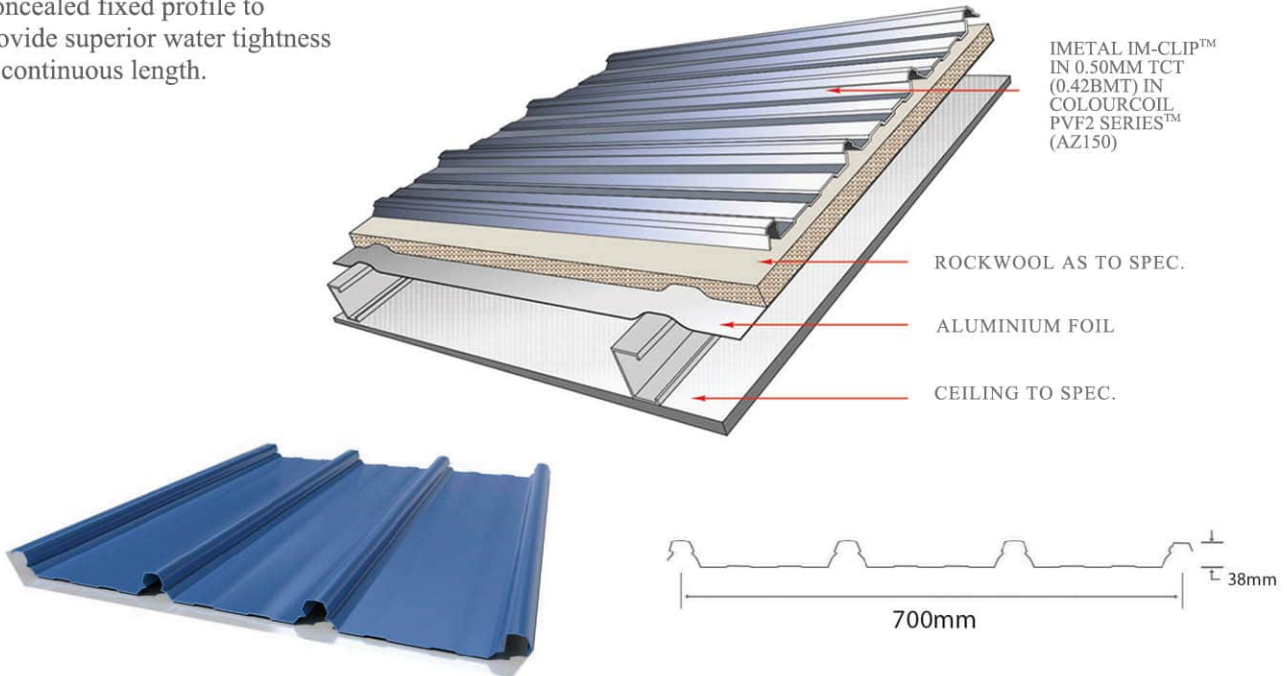
TOP TO BOTTOM (L-R):
Lapangan Rekreasi, Limbang | New Mukah Airport, Mukah | Private Bungalow, Miri | Overhead Bridge, Limbang





ROOFING | IM-CLIP™

Concealed fixed profile to provide superior water tightness in continuous length.



| PROFILE | THICKNESS | PAINT SYSTEM | COATING SYSTEM |
|--------------------------|--------------------------|--|------------------|
| IMETAL IM-CLIP™ 700MM | 0.55MM TCT 0.50MM TCT | PVF2 SERIES™ KRISTALMATT SERIES™ ELITE SERIES™ PUREMATT SERIES™ | AZ 200 AZ 150 |
| IMETAL IM-CLIP™ 430MM | 0.63MM TCT 0.55MM TCT | | |

Fasteners

All fastening screws must conform to AS3566 - Class 3 or Class 4.

Clip for IM-CLIP™ (700MM)



Clip for IM-CLIP™ (430MM)



PRODUCT BENEFITS

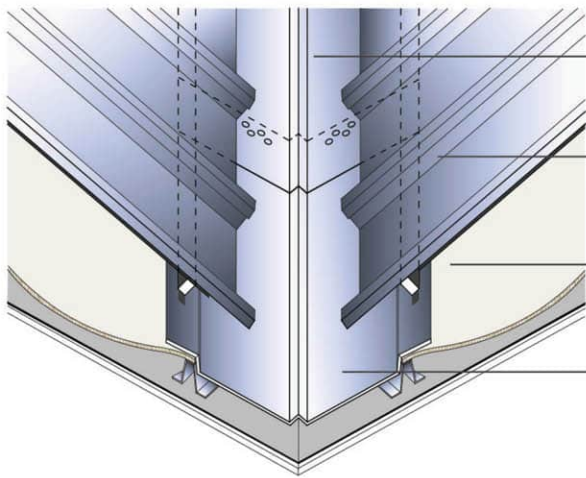
- ▶ Superior water tightness from concealed fixed method (no screws piercing)
- ▶ Aluminium/Zinc alloy coating provides excellent corrosion resistance
- ▶ Infrared cured paint system for better paint performance and smoother surface finish



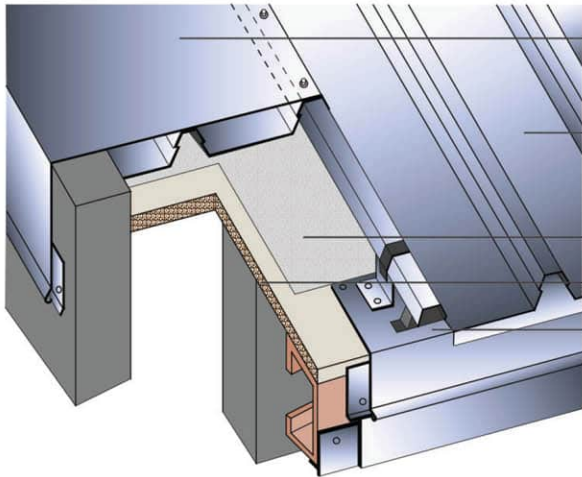
TOP TO BOTTOM:
MRSM, Bintulu | Balai Bomba, Daro | IMM
Technology Factory Phase 1, Kuching



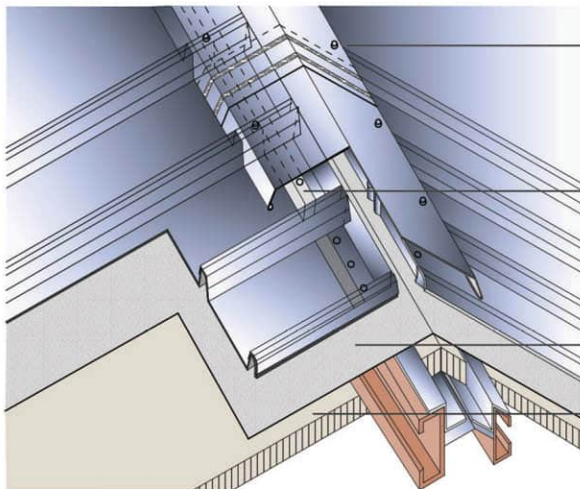
TOP TO BOTTOM:
La Promenade, Kota Samarahan | New Mukah
Airport, Mukah | La Promenade, Kota Samarahan



- VALLEY GUTTER
- IMETAL IM-CLIP™ IN 0.50MM TCT (0.42 BMT) IN COLOURCOIL PVF2 SERIES™ (AZ150)
- ROCKWOOL TO SPEC.
- INFILL



- FLASHING
- IMETAL IM-CLIP™ IN 0.50MM TCT (0.42 BMT) IN COLOURCOIL PVF2 SERIES™ (AZ150)
- AL FOIL TO SPEC.
- ROCKWOOL TO SPEC.
- INFILL

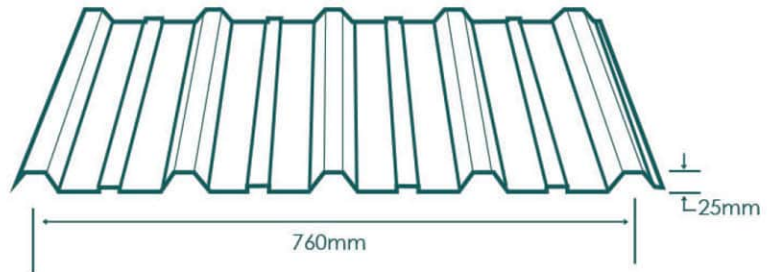
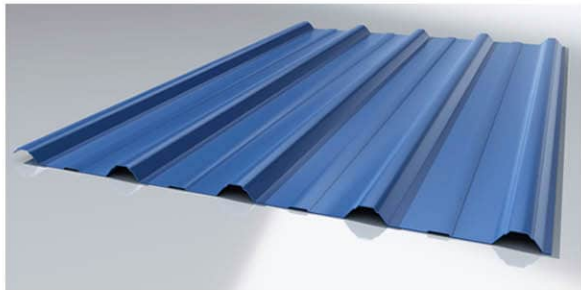
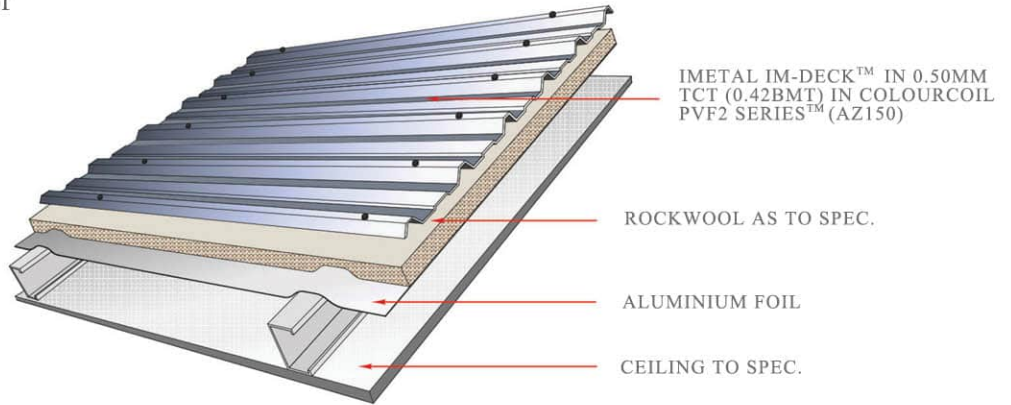


- RIDGE CAPPING
- INFILL
- IMETAL IM-CLIP™ IN 0.50MM TCT (0.42 BMT) IN COLOURCOIL PVF2 SERIES™ (AZ150)
- AL FOIL TO SPEC.
- ROCKWOOL TO SPEC.



ROOFING | IM-DECK™

Economical pierced fixing roof that is suitable for various applications.



| PROFILE | THICKNESS | PAINT SYSTEM | COATING SYSTEM |
|-----------------|--------------------------|--|------------------|
| IMETAL IM-DECK™ | 0.55MM TCT 0.50MM TCT | PVF2 SERIES™ KRISTALMATT SERIES™ ELITE SERIES™ PUREMATT SERIES™ | AZ 200 AZ 150 |
| | 0.41MM TCT | PREMIUM SERIES™ | AZ 100 |
| | 0.8MM TCT | ALUMINIUM | AL 3105 H18 |
| | 0.5MM TCT | STAINLESS STEEL | SUS 304 |
| | 0.48MM TCT 0.40MM TCT | AL/ZN STEEL | AZ 150 |

Fasteners

All fastening screws must conform to AS3566 - Class 3 or Class 4.

PRODUCT BENEFITS

- ▶ Straight and solid profile using pierced fixing screws
- ▶ Aluminium/Zinc alloy coating provides excellent corrosion resistance
- ▶ Infrared cured paint system for better paint performance and smoother surface finish



CLOCKWISE:
Pasar Tamu, Lawas | Medan Niaga, Satok | IMM
Technology Factory Phase 1, Kuching |
Homelands Garden, Kuching

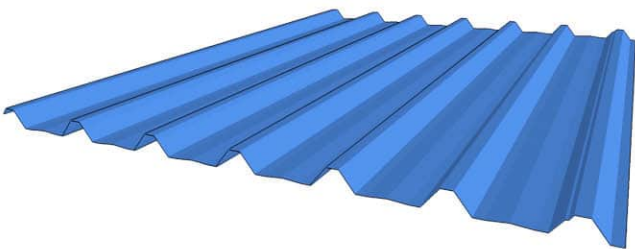


ROOFING | IM-SPAN™



TOP TO BOTTOM:
 Tabung Baitulmal Batu Kawa,
 Kuching | UNIMAS walkway,
 Samarahan

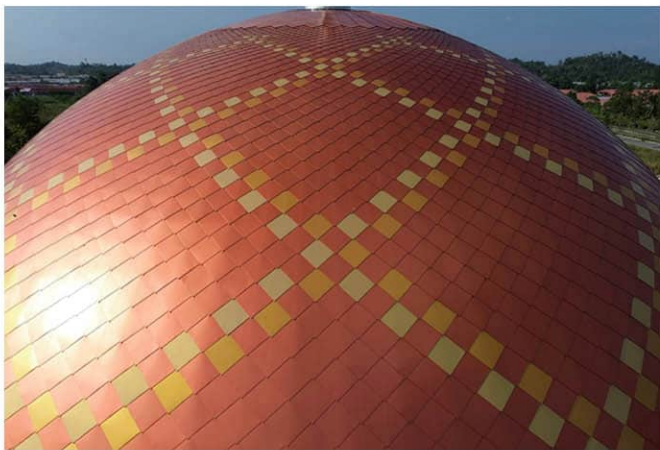
Versatile trapezoidal profile suitable
 as roof, ceiling and wall cladding.



Fasteners

All fastening screws must conform to AS3566 - Class 3 or Class 4.

| PROFILE | THICKNESS | PAINT SYSTEM | COATING SYSTEM |
|-----------------|--------------------------|--|------------------|
| IMETAL IM-SPAN™ | 0.55MM TCT 0.50MM TCT | PVF2 SERIES™ KRISTALMATT SERIES™ ELITE SERIES™ PUREMATT SERIES™ | AZ 200 AZ 150 |
| | 0.41MM TCT | PREMIUM SERIES™ | AZ 100 |



TOP TO BOTTOM (L-R):

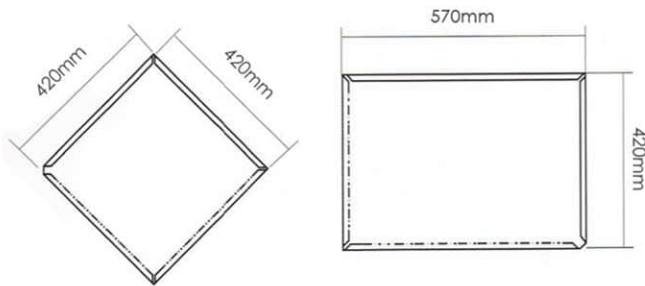
Masjid Ikhwanul Islam, Kuching | Masjid Darul Husna, Sibu Jaya | Masjid Darul Hana, Kuching

Versatile flat, rectangular or square profile to suit contemporary shingle appearance.



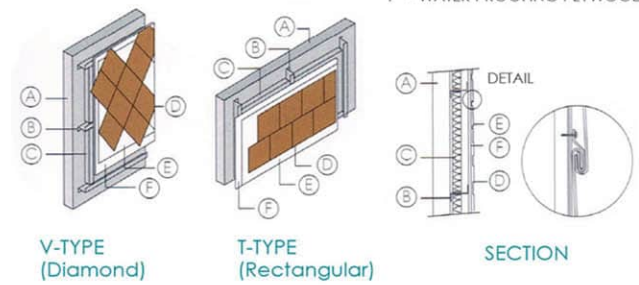
TOP: Surau Jalan Bako, Kuching

PROFILE



TYPICAL SECTION

- A = SUPPORTING STRUCTURE
- B = ZED FRAME
- C = INSULATION
- D = EUROSHINGLE™
- E = WATER PROOFING UNDERLAY
- F = WATER PROOFING PLYWOOD



| PROFILE | THICKNESS | PAINT SYSTEM | COATING SYSTEM |
|---------------------|--------------------------|---|------------------|
| IMETAL EUROSHINGLE™ | 0.55MM TCT 0.48MM TCT | DUOTONE PVF2 SERIES™ METALLIC PVF2 SERIES™ PVF2 SERIES™ KRISTALMATT SERIES™ ELITE SERIES™ | AZ 200 AZ 150 |

Fasteners

All fastening screws must conform to AS3566 - Class 3 or Class 4.

Clip for EUROSHINGLE™



PRODUCT BENEFITS

- ▶ Trendy shingle profile in diamond shape or brick shape
- ▶ Ability to cover domes with curving shapes and sizes
- ▶ Aluminium/ Zinc alloy coating provides excellent corrosion resistance
- ▶ Infrared cured paint system for better paint performance and smoother surface finish

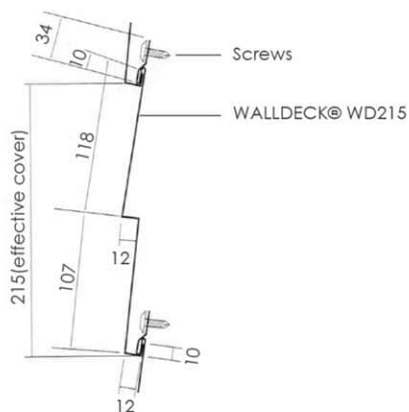


WALL CLADDING | WALLDECK™ WD215

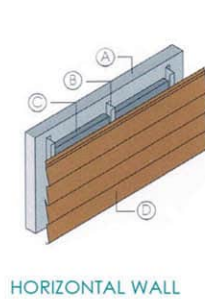


LEFT TO RIGHT:
Saradise BDC, Kuching | Imetal
Office, Kuching

Most effective and cost effective
choice for wall cladding.



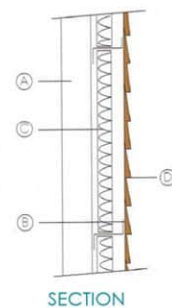
PROFILE



HORIZONTAL WALL

TYPICAL SECTION

- A = SUPPORTING STRUCTURE
- B = ZED FRAME
- C = INSULATION
- D = WALLDECK® WD215

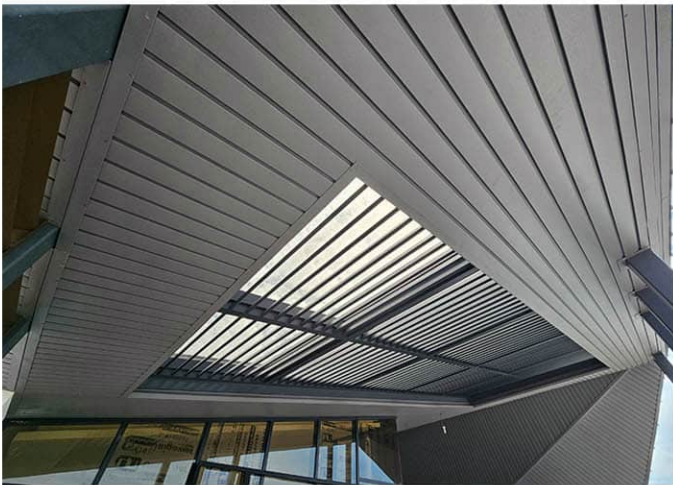


SECTION

| PROFILE | THICKNESS | PAINT SYSTEM | COATING SYSTEM |
|---------------------|------------|--|----------------|
| IMETAL WALLDECK™ | 0.48MM TCT | PVF2 SERIES™ KRISTALMATT SERIES™ ELITE SERIES™ PUREMATT SERIES™ | AZ 150 |



CEILING | EUROPANEL™ EP100/200 & EP200X



TOP TO BOTTOM (L-R):
Private Bungalow, Kuching | Private Bungalow,
Miri | Private Bungalow, Kuching | Balai Bomba,
Daro

EUROPANEL™ EP100/200
Carrier based ceiling used as soffit, for both
internal and external applications



CLOCKWISE:
 Saradise Housing, Kuching (EP200X) | Private Bungalow, Miri (EP100) | Masjid Darul Husna, Sibujaya (EP100)

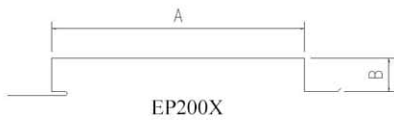
EUROPANEL™ EP200X

Economical flat ceiling panel ideal for exterior ceiling.

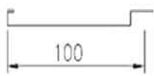
PROFILE

TYPICAL SECTION

- A = SUPPORTING STRUCTURE
- B = ZED FRAME
- C = INSULATION
- D = EUROPANEL™ EP250SS



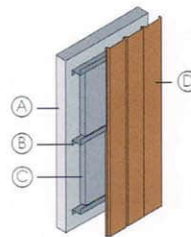
A = 200 MM
 B = 25 MM



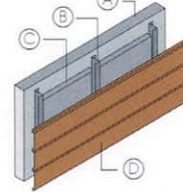
EP100



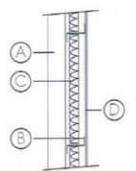
EP200



VERTICAL WALL



HORIZONTAL WALL



SECTION

| PROFILE | THICKNESS | PAINT SYSTEM | COATING SYSTEM |
|--------------------------------|--|---|----------------|
| IMETAL EUROPANEL™ EP100/200 | 0.48MM TCT | PVF2 SERIES™ KRISTALMATT SERIES™ ELITE SERIES™ PUREMATT SERIES™ | AZ 150 |
| | 0.50MM TCT | WOODGRAIN | ALUMINIUM |
| IMETAL EUROPANEL™ EP200X | 0.63MM TCT 0.55MM TCT 0.48MM TCT | METALLIC PVF2 SERIES™ PVF2 SERIES™ KRISTALMATT SERIES™ ELITE SERIES™ | AZ 150 |
| | 0.50MM TCT | WOODGRAIN | ALUMINIUM |



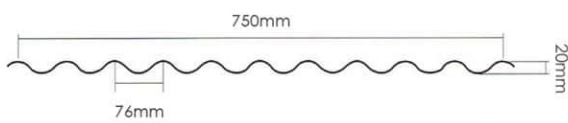
CEILING | EUROWAVE™



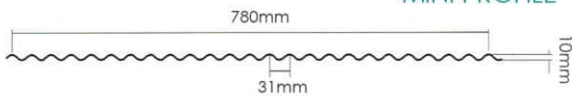
LEFT TO RIGHT:
Saradise BDC, Kuching | Lapangan
Rekreasi, Limbang

Sinusoidal wave suitable for
contemporary ceiling or interior
design.

REGULAR PROFILE

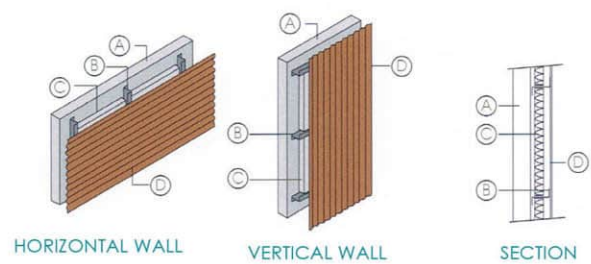


MINI PROFILE



TYPICAL SECTION

- A = SUPPORTING STRUCTURE
- B = ZED FRAME
- C = INSULATION
- D = EUROWAVE®

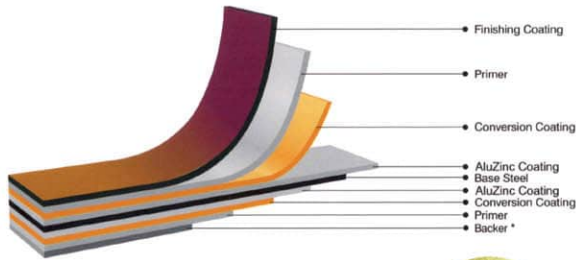


| PROFILE | THICKNESS | PAINT SYSTEM | COATING SYSTEM |
|---------------------|------------|--|----------------|
| IMETAL EUROWAVE™ | 0.48MM TCT | METALLIC PVF2 SERIES™ PVF2 SERIES™ KRISTALMATT SERIES™ ELITE SERIES™ PREMIUM SERIES™ | AZ 150 |



PAINT SYSTEMS | SPECIFICATIONS

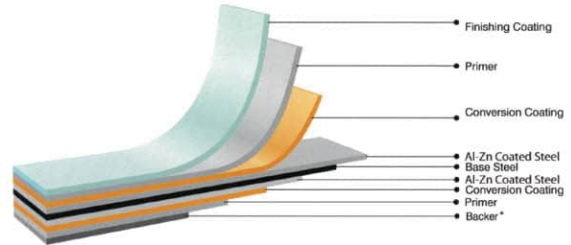
DUOTONE PVF₂ Series™



| Top | | Back | | Gloss |
|--------|---------|--------|--------|-------|
| Primer | Finish | Primer | Backer | Level |
| 5 | 33 - 35 | 5 | 5 | 25% |



METALLIC PVF₂ Series™



| Top | | Back | | Gloss |
|--------|---------|--------|--------|-------|
| Primer | Finish | Primer | Backer | Level |
| 5 | 18 - 20 | 5 | 5 | 25% |



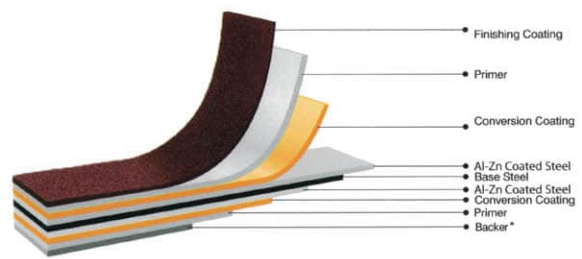
PVF₂ Series™



| Top | | Back | | Gloss |
|--------|---------|--------|--------|-------|
| Primer | Finish | Primer | Backer | Level |
| 5 | 18 - 20 | 5 | 5 | 25% |



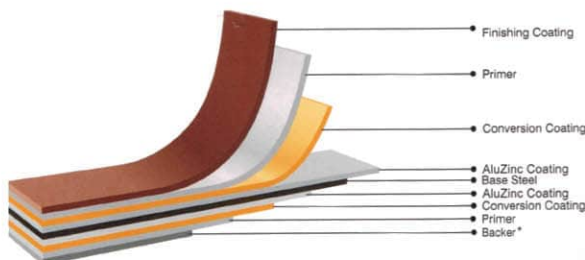
KRISTALMATT Series™



| Top | | Back | | Gloss |
|--------|---------|--------|--------|-------|
| Primer | Finish | Primer | Backer | Level |
| 5 | 18 - 20 | 5 | 5 | 10% |



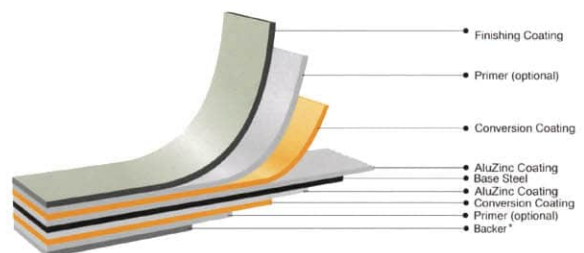
ELITE Series™



| Top | | Back | | Gloss |
|--------|---------|--------|--------|-------|
| Primer | Finish | Primer | Backer | Level |
| 5 | 18 - 20 | 5 | 5 | 25% |



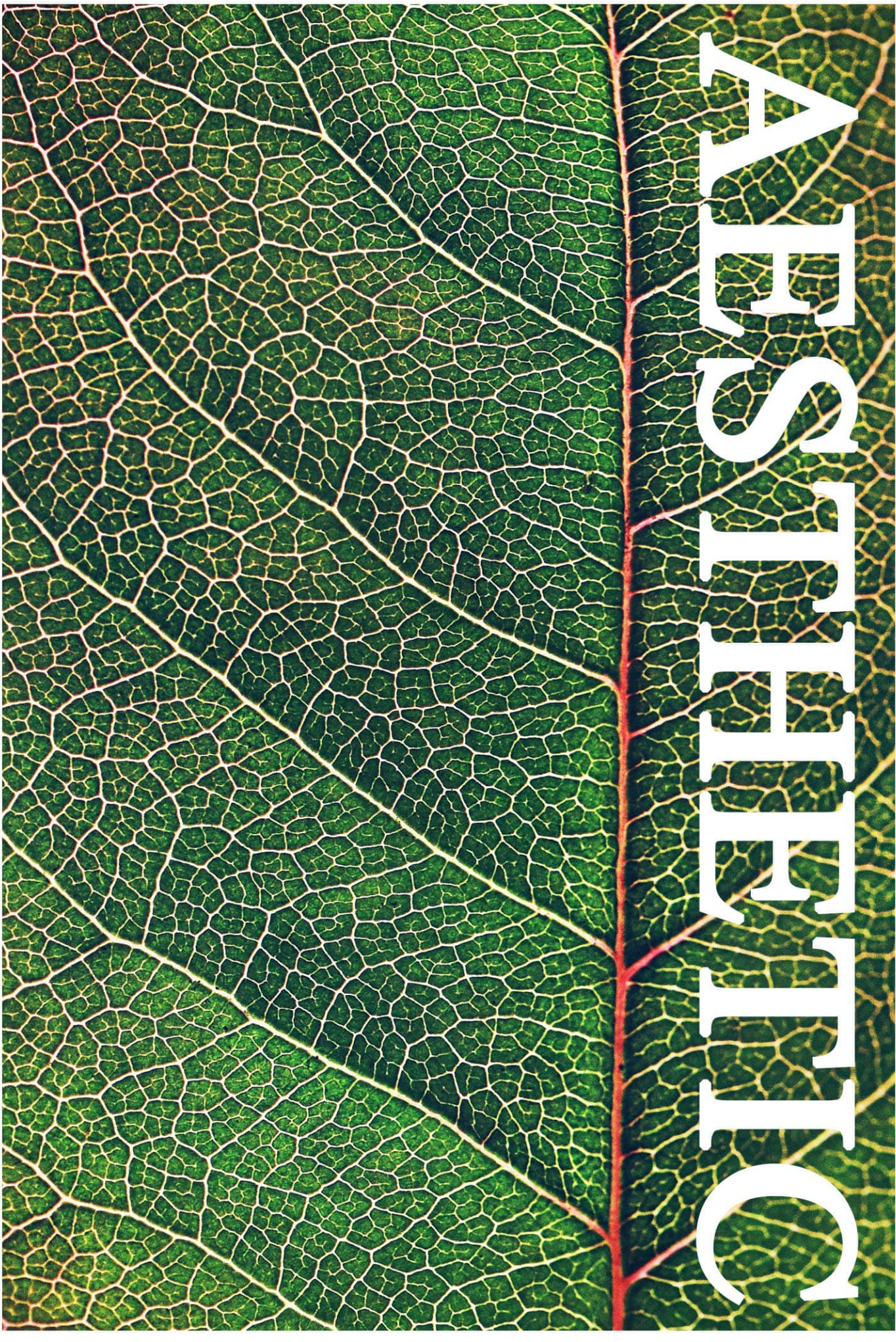
PUREMATT Series™



| Top | | Back | | Gloss |
|---------|--------------|--------|--------|-------|
| Finish | Backing Coat | Primer | Backer | Level |
| 17 - 20 | | 8 - 10 | | 10% |



AEROSTEOTIC





SCREENS & FACADES



CLOCKWISE:
 Masjid Darul Husna, Sibujaya | Masjid Darul Husna,
 Sibujaya | Masjid Darul Husna, Sibujaya

Non structural façade disguising the realities of forms,
 size and structure of a building behind.

- ▶ Plasma / Laser Cut
- ▶ Waterjet Cut
- ▶ Powder Coating

| PROFILE | THICKNESS | PAINT SYSTEM | COATING SYSTEM |
|------------------|-----------|-------------------------------|------------------------------|
| IMETAL FACADE | 2MM - 4MM | POWDER COATED TO AAMA 2604 | SOLID ALUMINIUM |
| | 4MM | PVDF (KYNAR 500) | ALUMINIUM COMPOSITE PANEL |

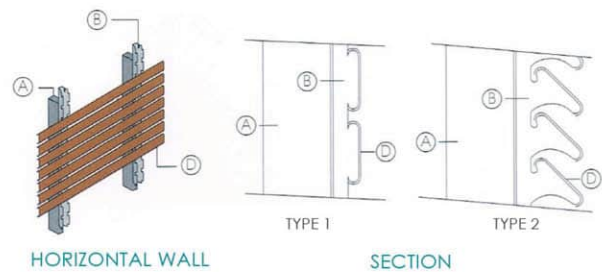
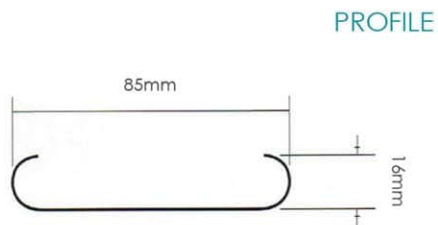


LEFT TO RIGHT:
Driving School, Matang | Driving School, Matang

CITYVENT™ is a fixed louvre system with strong and durable C-shaped panels.

TYPICAL SECTION

- A = SUPPORTING STRUCTURE
- B = G.I CARRIER
- D = CITYVENT™



| PROFILE | THICKNESS | PAINT SYSTEM | COATING SYSTEM |
|------------------|------------|---|----------------|
| IMETAL CITYVENT™ | 0.48MM TCT | KRISTALMATT SERIES™ ELITE SERIES™ PREMIUM SERIES™ | AZ 150 |



SCREENS & FACADES | LOUVRES



TOP TO BOTTOM:
SJK Chung Hua No.4, Kuching | Aeon Mall
Kuching Central, Kuching

Powder coated aluminium panels or prepainted steel sheets to be fabricated to become louvres and act as façade/ screen or provide shade.

INTERVENTION





TRUSSES | IM-TRUSS™ & IM-TRUSS™ LITE



LEFT:
Pusat Pembangunan Kemahiran Sarawak (PPKS), Mukah

IMETAL IM-TRUSS™ uses mild steel sections to cater for larger spans with architecturally pleasing features.

IMETAL IM-TRUSS™ LITE is suitable for smaller buildings such as residential or commercial buildings with supporting spans up to 15m.

| DESIGN STANDARD | AUSTRALIAN STANDARD AS4600 OR BRITISH STANDARD BS5950 | |
|-----------------|---|--|
| | METAL ROOFING LIVE LOAD ON ROOF DEAD LOAD ON ROOF CEILING LOAD WIND SPEED POINT LOAD | RECOMMENDED LOADING 0.25 KPA 0.22 KPA 0.13 KPA 41 M/S 0.9 KN |
| | CONCRETE TILES LIVE LOAD ON ROOF DEAD LOAD ON ROOF CEILING LOAD WIND SPEED POINT LOAD | RECOMMENDED LOADING 0.75 KPA 0.75 KPA 0.13 KPA 41 M/S 0.9 KN |
| | TRUSS DEFLECTION | SPAN / 250 |
| | BATTEN DEFLECTION | SPAN / 250 |
| MATERIALS | BATTENS TRUSS | G550, 0.50 MM - 0.75MM MIN G550 FOR STEEL < 1MM MIN G450 FOR STEEL > 1MM |
| COATING MASS | BATTENS TRUSS | AZ150 AZ150 FOR STEEL < 1MM Z275 FOR STEEL > 1MM |
| FASTENERS | COMPLIES TO AS3566 CLASS 2 | |



CLOCKWISE:
SEDC Carpark, Kuching | The Republic Condominiums,
Kuching | Rivervale Condominium, Kuching | Tatau
Mosque, Tatau



CLOCKWISE:
Pusat Pembangunan Kemahiran Sarawak (PPKS),
Mukah | Masjid Darul Hana, Kuching | Kampus
Institut Kemajuan Desa (INFRA), Samarahan

MAAD ETOJAST





KUCHING OFFICE

LOT 1221, BLOCK 8, MTL D, PHASE 2A,
DEMAK LAUT INDUSTRIAL PARK,
JALAN BAKO, 93050, KUCHING.
TEL: 082 496 336 | 082 496 339 | 010 982 0235

BINTULU OFFICE

1ST FLOOR, NO 572, LOT 4385,
PARKCITY COMMERCE SQUARE,
PHASE 7, 97000, BINTULU.
TEL: 012 852 8712