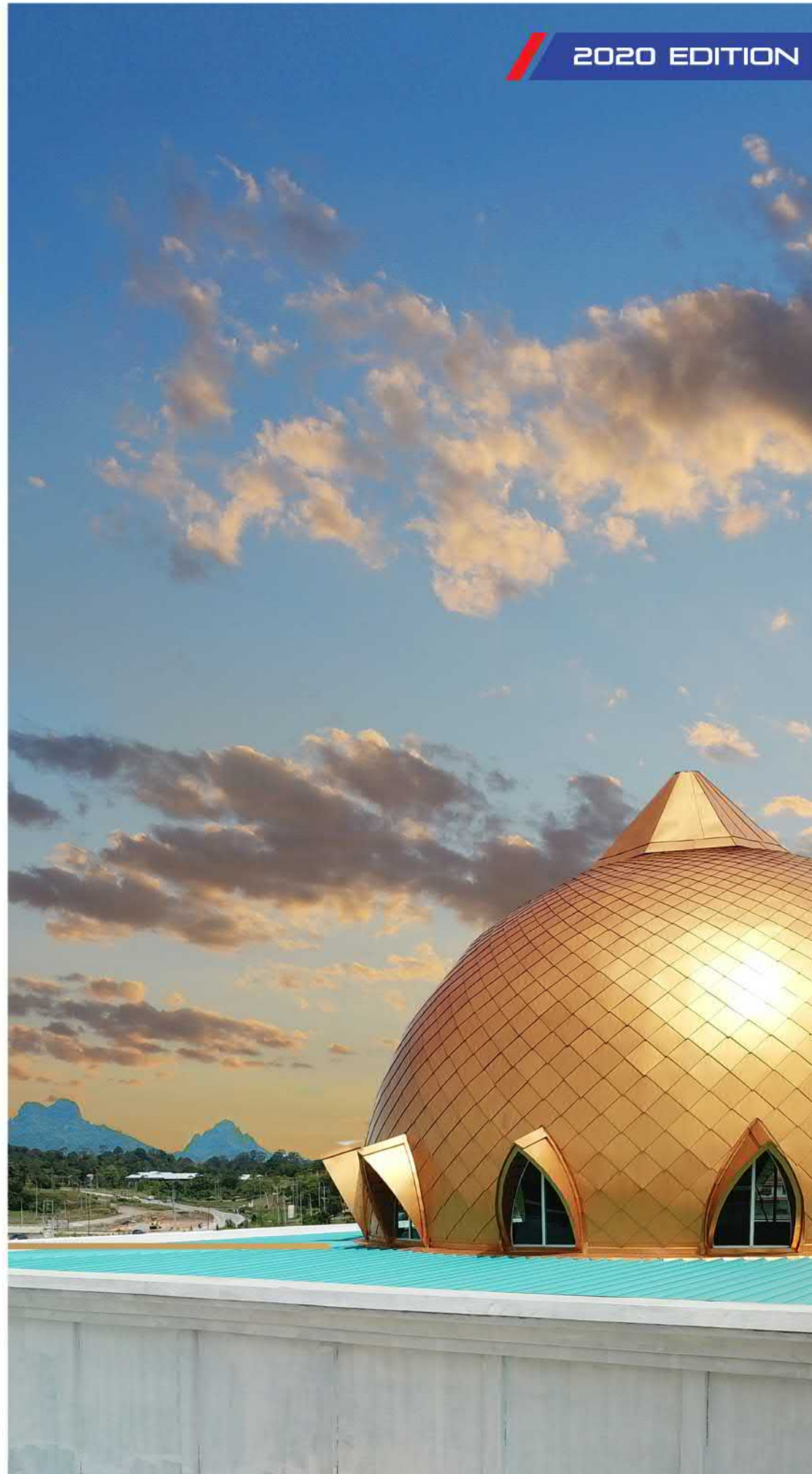
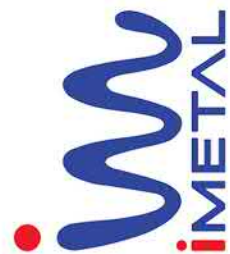


ROOFING  
WALL CLADDING  
LOUVRES  
CEILING  
TRUSSES  
SCREENS & FACADES

CONCEPT TO REALITY



2020 EDITION



IMETAL (M) SDN BHD (1034672D)

Lot 1221, Block 8, MTL, Phase 2A, Demak Laut Industrial Park,  
Jalan Bako, 93050, Kuching, Sarawak

[www.imetal.com.my](http://www.imetal.com.my) // [enquiry@imetal.com.my](mailto:enquiry@imetal.com.my)  
082 496 336 // 082 496 339 // 010 982 0235



# GETTING TO KNOW IMETAL

ROOFING | WALL CLADDING | LOUVRES | CEILING | TRUSSES | SCREENS AND FACADES



**PEB STEEL**  
BUILDING FOR LIFE  
PRE ENGINEERED BUILDING (PEB)



**AMPELITE**  
AMPELITE TRANSLUCENT ROOF



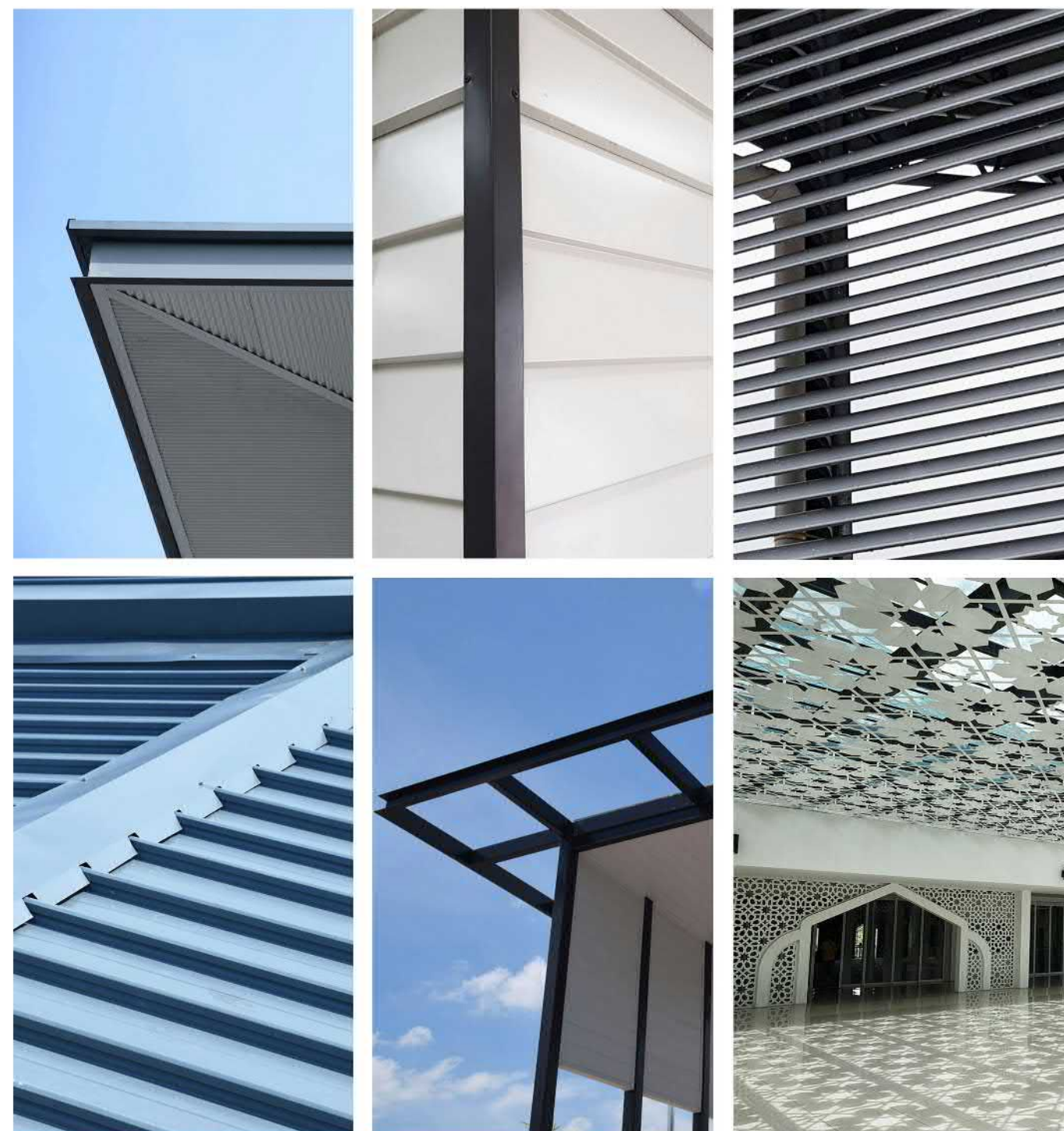
GRACE Ice & Water Shield ecoWool  
MAPEI Duofoil  
ADHESIVES • SEALANTS • CHEMICAL PRODUCTS FOR BUILDING Roof Insulation Foil  
INSULATION



**DECRA**  
ROOFING SYSTEMS  
DECRA ROOF

## SUPERIOR FUNCTIONALITY

We supply and install metal roofing, metal cladding and metal ceiling.  
We design and install lightweight trusses, mild steel structures and architectural screens







**ROOFING**  
 Tatau Mosque | Tatau  
 Material (Dome): Euroshingle, Metallic Pvf<sub>2</sub> Series™  
 Material (Roof): I-Clip, Kristalmatt Series™

ABOUT US

BEACON  
 OF A  
 NEW  
 DAWN

In 2013, we embarked on our journey of innovation to bring forth a revolutionary approach towards metal roofing for buildings across Sarawak.

While superior functionality takes precedence, a stylish touch resonates with the inner artist.

With COLOURCOIL® pre-painted coil as our signature, our business focuses on roll forming of metal roofing, ceiling, wall cladding, louvres and facades, along with the design and installation of both lightweight trusses and mild steel fabrication.



**ROOFING**  
 SESCO Substation | Serian  
 Material: I-Clip, Kristalmatt Series™

VISION &  
 MISSION

Our vision is to be the leading supplier of metal roofing and facades across Sarawak; known for aesthetics with proven function through innovative processes.

Guided by the principles of innovation, we convert concept to reality and aim to deliver optimum Client satisfaction through unparalleled excellence in quality.



## OUR PHILOSOPHY

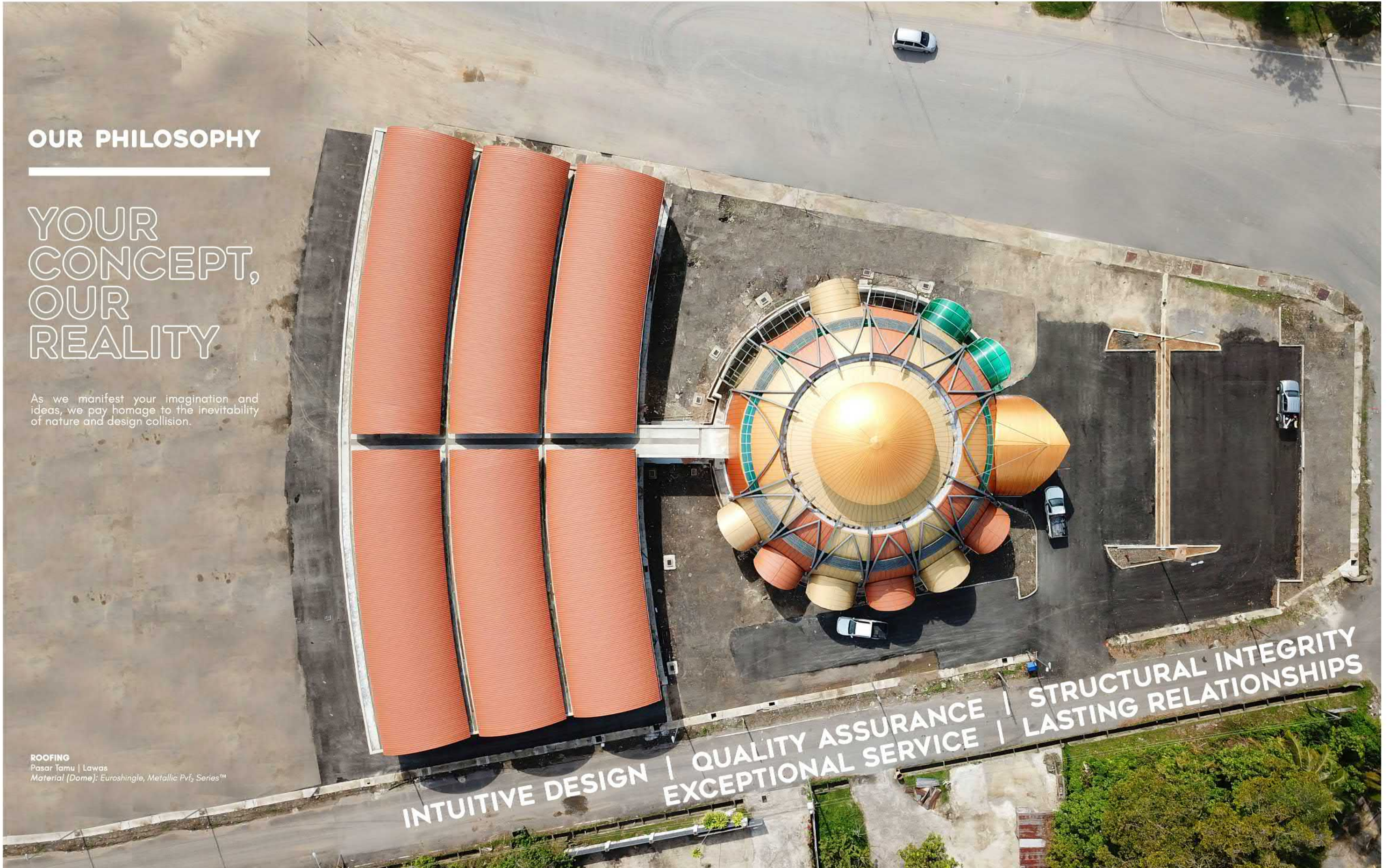
---

# YOUR CONCEPT, OUR REALITY

As we manifest your imagination and ideas, we pay homage to the inevitability of nature and design collision.

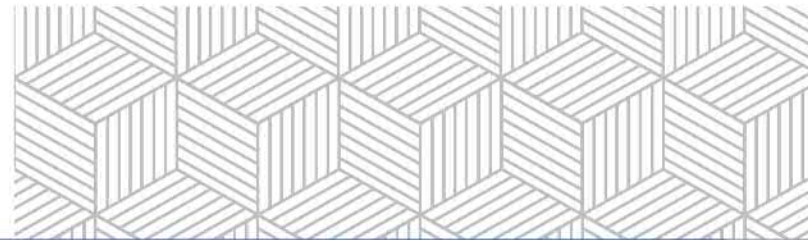
**ROOFING**  
Pasar Tamu | Lawas  
Material (Dome): Euroshingle, Metallic Pvf<sub>2</sub> Series™

INTUITIVE DESIGN | QUALITY ASSURANCE | STRUCTURAL INTEGRITY  
EXCEPTIONAL SERVICE | LASTING RELATIONSHIPS





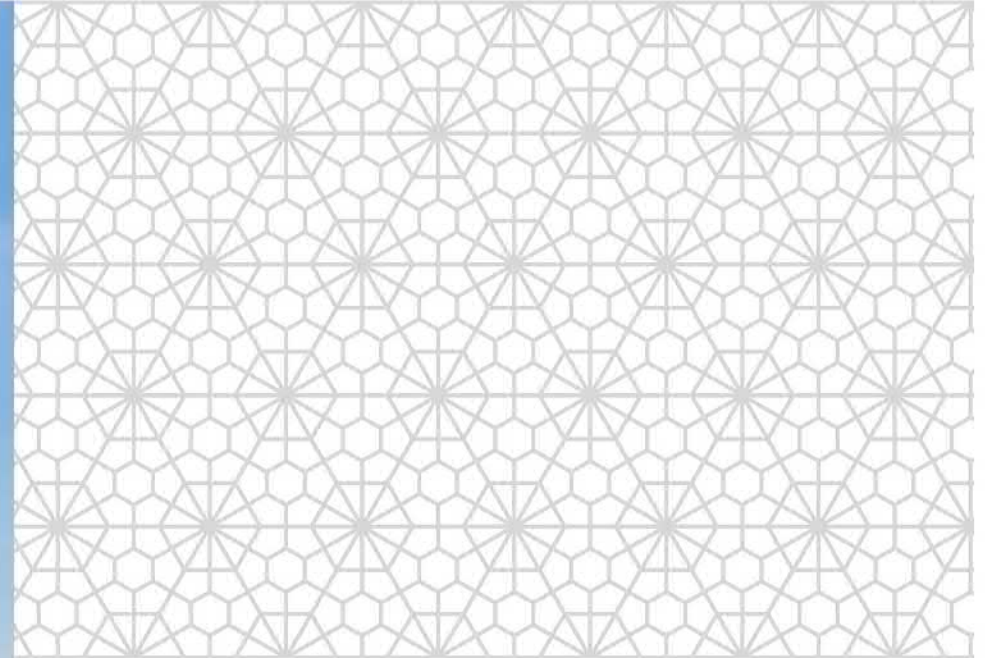
WE BORROW FROM  
NATURE THE SPACE UPON  
WHICH WE BUILD



**ROOFING**  
Pusat Interpretasi Heart of Borneo | Lawas  
Material: I-Seam, Kristalmatt Series™







**ROOFING**  
Matu Mosque, Mukah  
Material (Dome): iMetal Aluminium Panel Dome™





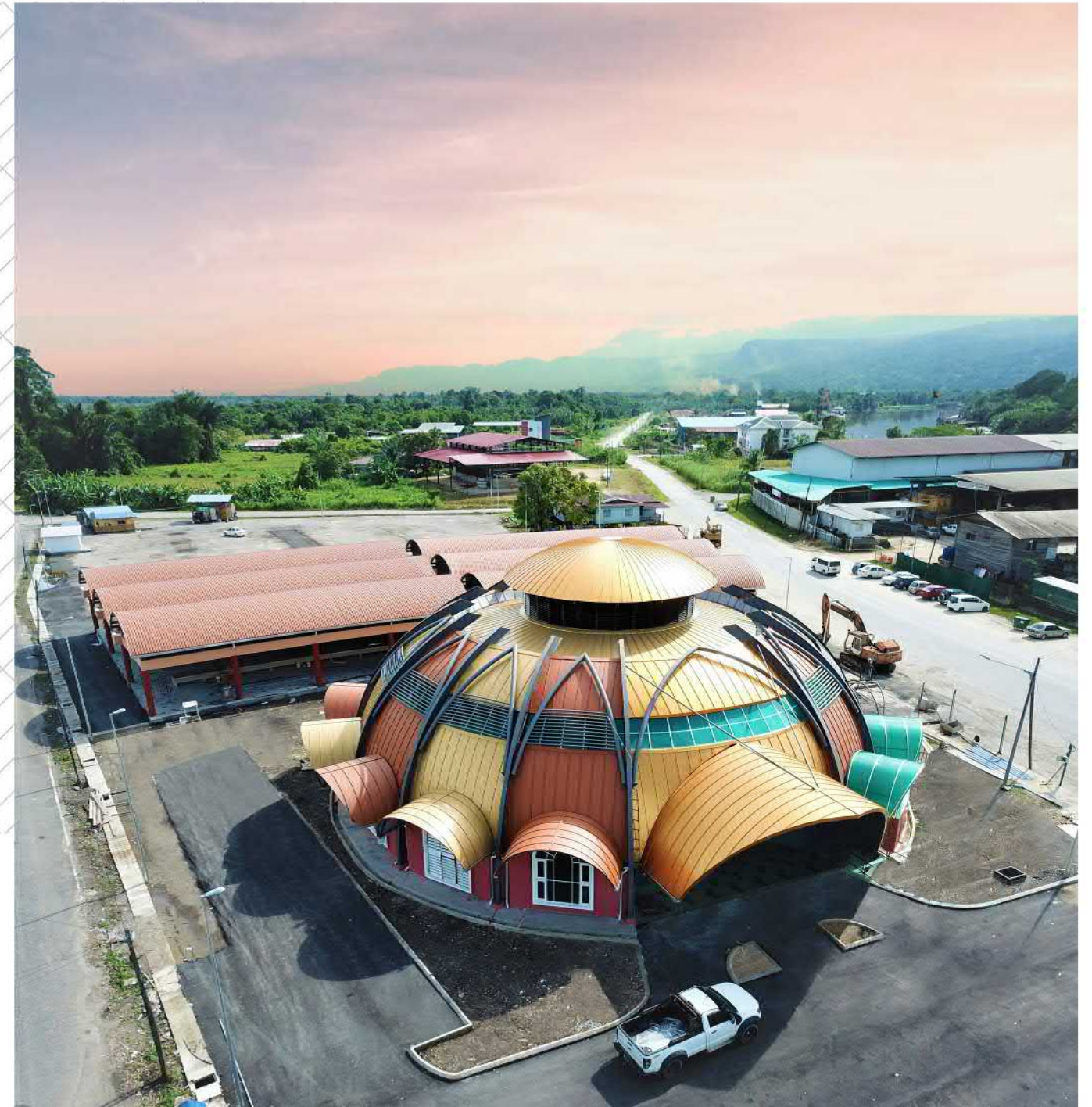


**ROOFING**  
La Promenade Clubhouse | Kota Samarahan  
Material: I-Seam, Elite Series™



WE REDEFINE LINES,  
SPACES AND ALL THAT IS  
IN BETWEEN

**ROOFING**  
Pasar Tamu | Lawas  
Material: I-Seam, Metallic PvF, Series™







**ROOFING**  
 Thai Temple | Kuching  
 Material: Decra, Corona Shake



**ROOFING**  
 UNIMAS Walkway | Kota Samarahan  
 Material: I-Seam, Metallic Pvf<sub>3</sub> Series™





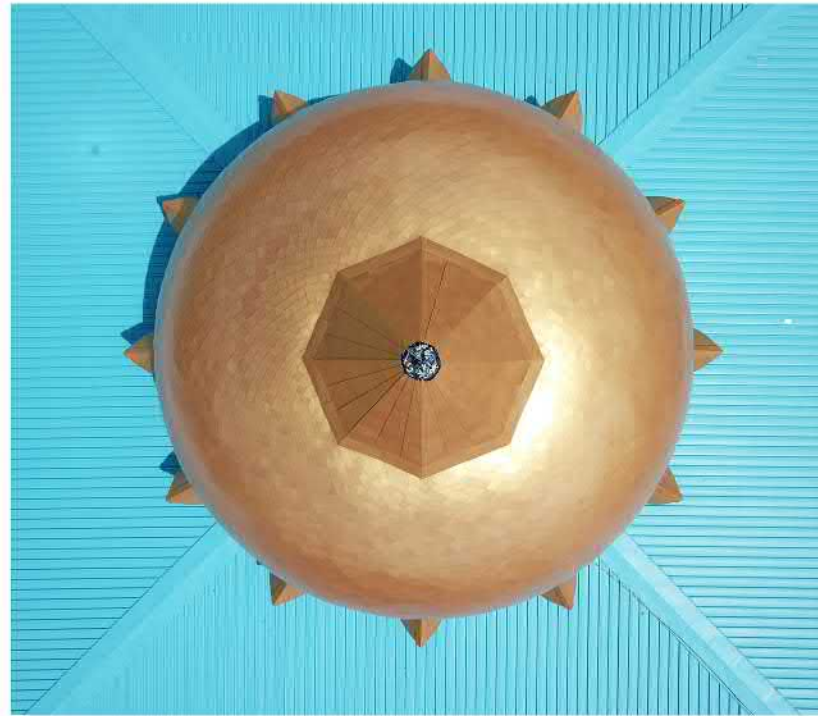


**FACADE**  
AEON Mall Kuching Central | Kuching  
Material (Facade): Powder coated aluminium panels or prepainted steel sheets to be fabricated to become louvres and act as facade/screen or provide shade



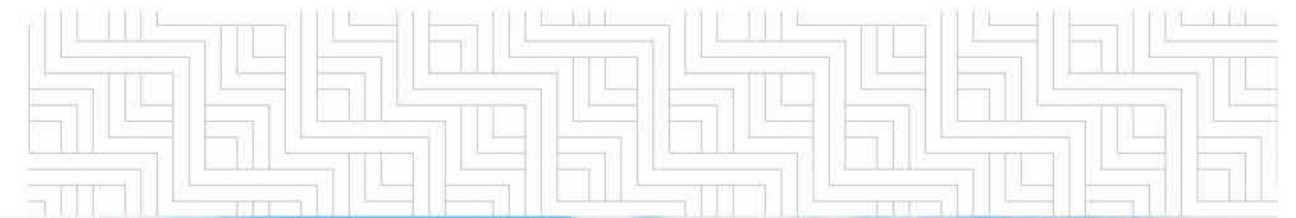
**ROOFING**  
Country Heights Residences | Kuching  
Material: I-Clip, Kristalmatt Series™





WE ASPIRE TO LOOK UP AND  
KNOW THAT THE SKY'S NOT THE  
LIMIT

**ROOFING**  
Tatau Mosque | Tatau  
Material (Dome): Eurashingle, Metallic Pvf, Series™  
Material (Roof): I-Clip, Kristalmatt Series™







**ROOFING**  
 Jabatan Laut Miri | Miri  
 Material: I-Seam, Metallic PV2 Series™

**ROOFING**  
 Miri Times Square | Miri  
 Material: I-Clip, Kristalmatt Series™



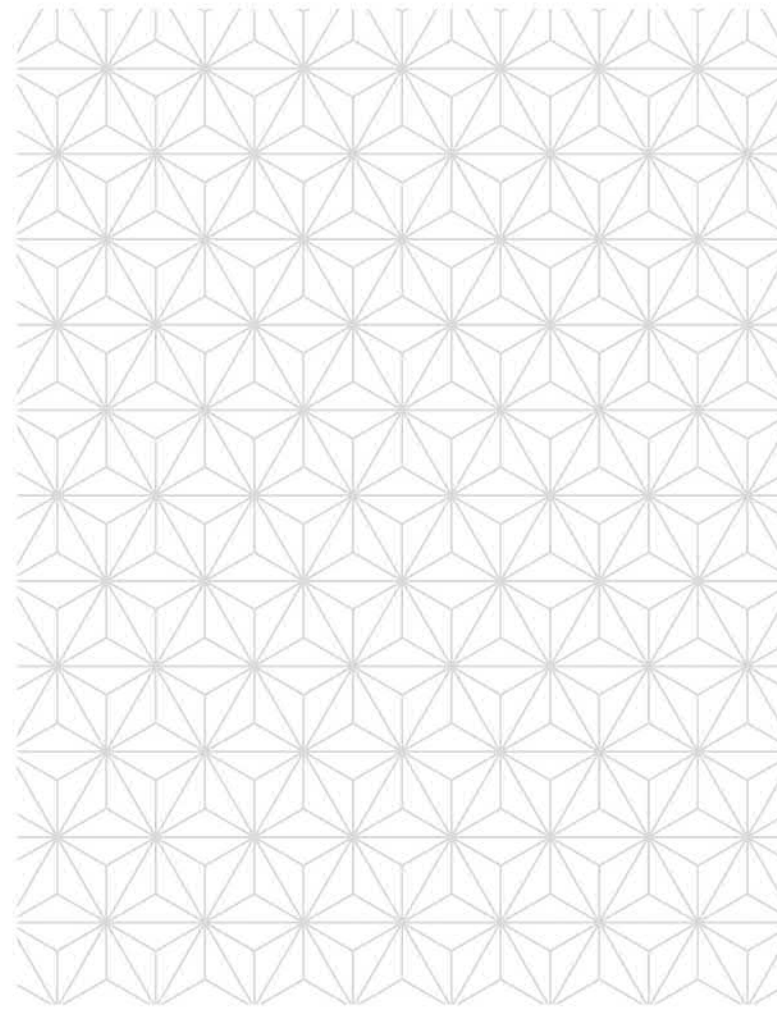




**ROOFING / CLADDING**  
 IMM Technology Factory Phase 1 (Left) & Phase 2 (Right) | Kuching  
 Material (Roof): I-Clip, Premium Series™ / SUS304  
 Material (Cladding): I-Deck, Premium Series™ / SUS304







# FORM FOLLOWS FUNCTION



**ROOFING**  
Rivervale Residences | Kuching  
Material (Roof): I-Clip, Kristalmatt Series™





**ROOFING / SCREEN & FACADES**  
Pedestrian Bridge | Kota Samarahan  
Material (Roof): I-Seam Kristalmatt Series™  
Material (Facade): Powder coated aluminium panels or prepainted steel sheets to be fabricated to become louvres and act as facade/screen or provide shade



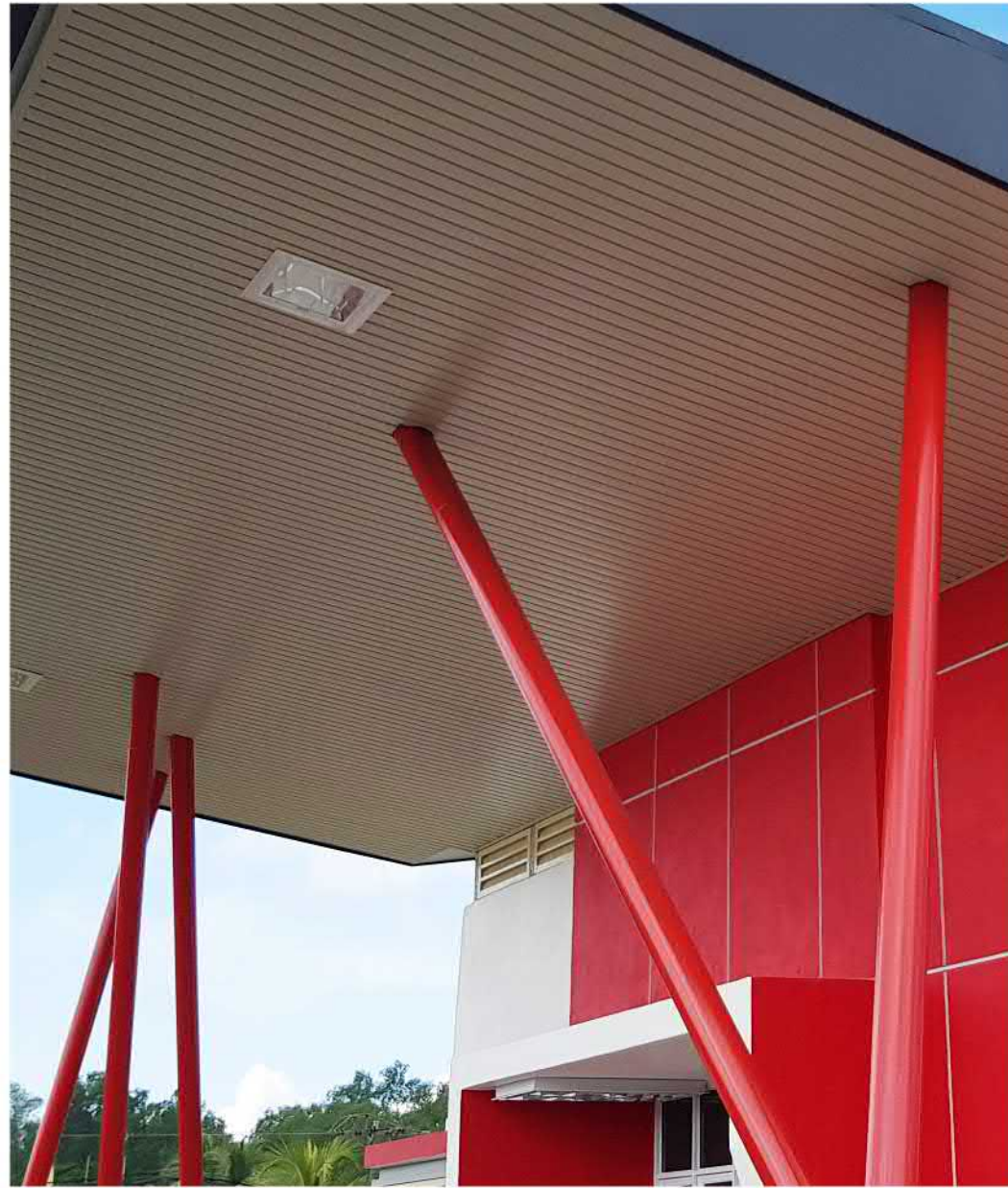


**ROOFING**  
Private Detached House | Kuching  
Material: Decra, Corona Shake



WE UNDERSTAND ALL THAT WE BUILD, WILL TAKE CARE OF US

**CEILING**  
Balai Bomba | Daro  
Material: Europanel™ EPI00





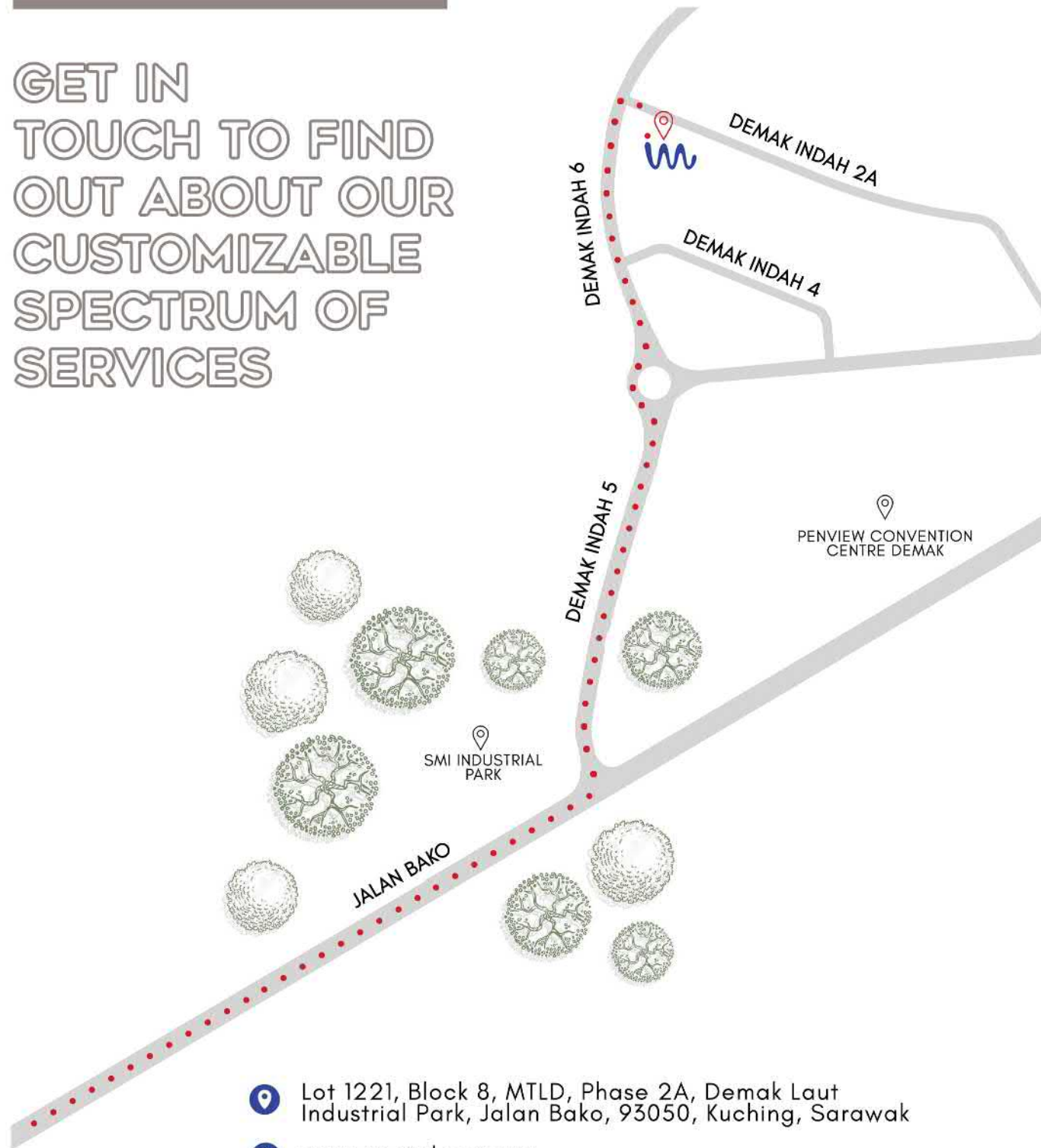
**ROOFING**  
Masjid Darul Hana | Kuching  
Material (Dome): Euroshingle™





## CONTACT US

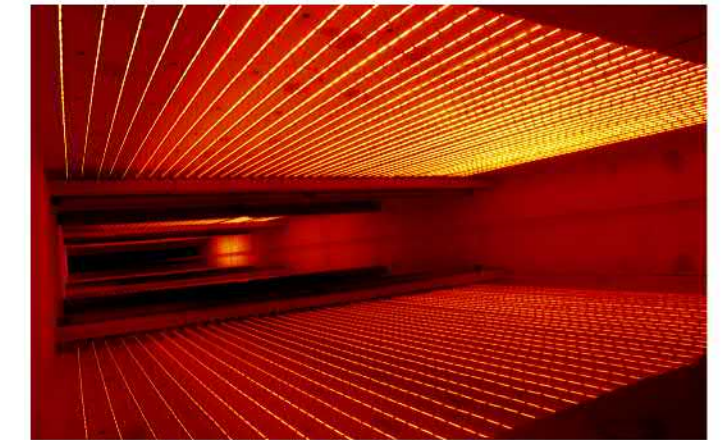
GET IN TOUCH TO FIND OUT ABOUT OUR CUSTOMIZABLE SPECTRUM OF SERVICES



-  Lot 1221, Block 8, MTL, Phase 2A, Demak Laut Industrial Park, Jalan Bako, 93050, Kuching, Sarawak
-  [www.imetal.com.my](http://www.imetal.com.my)
-  [enquiry@imetal.com.my](mailto:enquiry@imetal.com.my)
-  082 496 336 // 082 496 339 // 010 982 0235



THE 1<sup>ST</sup> COLOUR COATING LINE IN ASIA PACIFIC FEATURING INFRA-RED CURING TECHNOLOGY



### INFRARED

- Zero Pinholes
- Smooth Finish
- Consistent Paint Thickness

Colourcoil Industries is a well established Malaysian owned company specializing in the manufacturing of prepainted steel coils (i.e. color coated steel coils). We are the first in Asia Pacific to feature the latest State-of-the-Art infra-red coil coating technology producing high quality prepainted metal products, catering to the wide applications in the building and construction industry.



LARGEST MANUFACTURER OF ROLLED ALUMINIUM PRODUCTS IN MALAYSIA AND A LEADING SUPPLIER IN THE ASIA PACIFIC REGION WITH A STRONG GLOBAL PRESENCE



Aluminium Company of Malaysia Berhad (ALCOM) is the largest manufacturer of rolled aluminium products in Malaysia and a leading supplier of aluminium rolled products in the Asia Pacific region.

Excelling in fin stock used in heating and cooling systems, ALCOM is a pioneer in the field, with its unparalleled manufacturing capacity, forward-thinking technological prowess and cutting-edge research and development operations.

- Lightweight
- Recyclability
- Reflectivity
- Ductility
- Corrosion Resistance
- Guarantee

## MATERIALS