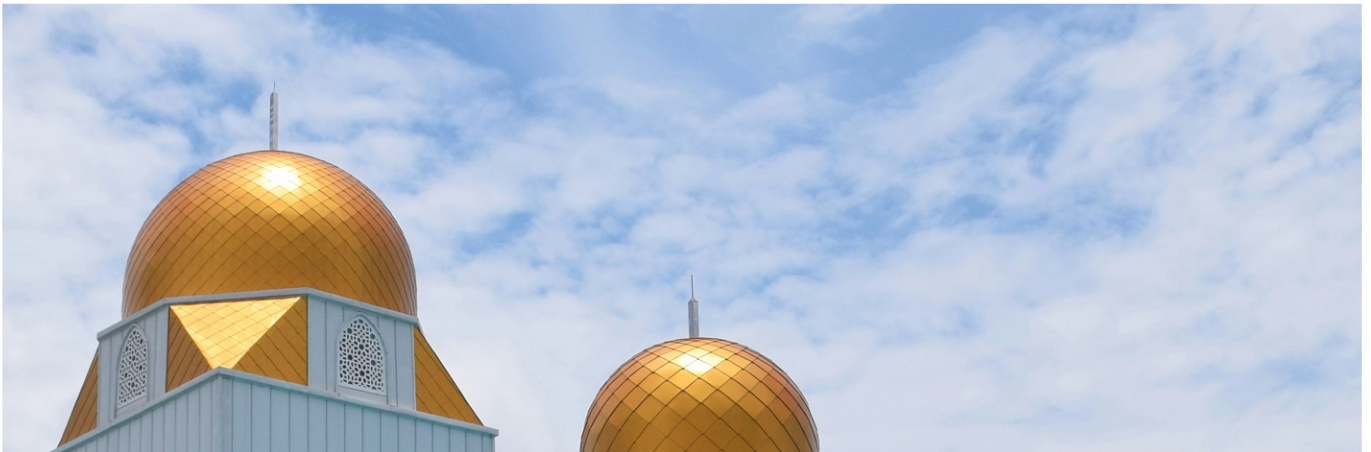
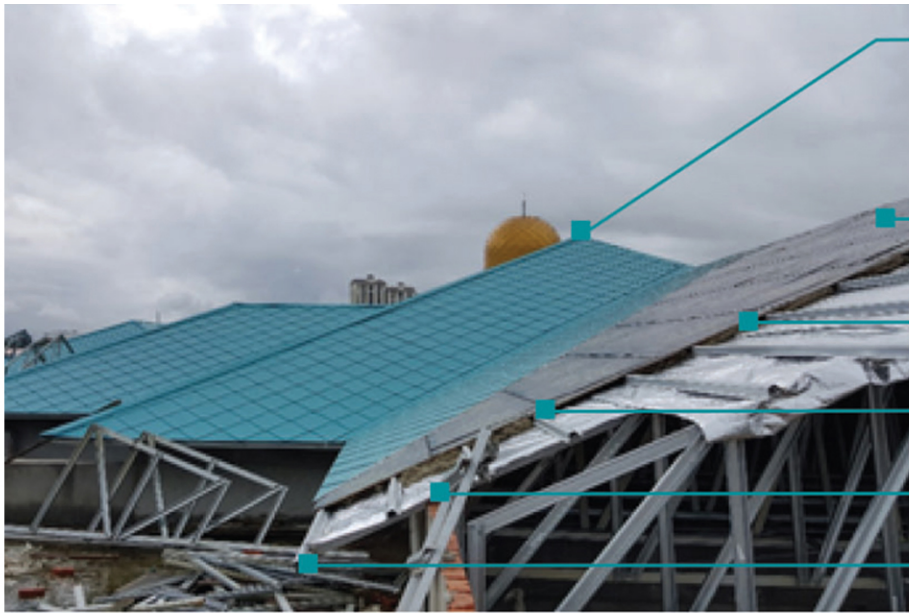


PRODUCT CATALOGUE | EUROSHINGLE™ METAL ROOFING





IMETAL EUROSHINGLE™ IN
0.48MM TCT (0.40MM BMT) IN
COLOURCOIL KRISTALMATT
SERIES™ (AZ150)

1.5MM THK BITUMINOUS FELT

12MM THK WBP PLYWOOD

ROCKWOOL AS TO SPEC.

ALUMINIUM FOIL

BATTENS @ 600MM C/C

PROFILE	THICKNESS	PAINT SYSTEM	COATING SYSTEM
IMETAL EUROSHINGLE™	0.55MM TCT 0.48MM TCT	DUOTONE PVF2 SERIES™ METALLIC PVF2 SERIES™ PVF2 SERIES™ KRISTALMATT SERIES™ ELITE SERIES™ PREMIUM SERIES™	AZ 200 AZ 150

Fasteners

All fastening screws must conform to AS3566 - Class 3. They are to be hexagon headed and for roofing. It must be used with sealing washers. Clips are made of either stainless steel or aluminium/zinc steel.

Clip for steel (0.75mm BMT or greater)



For Steel (0.75BMT or greater)
-Tenn™ DX522 WO



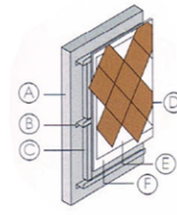
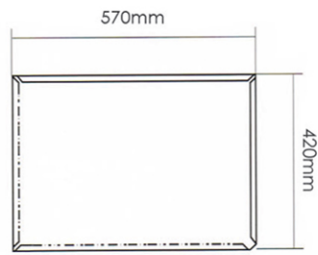
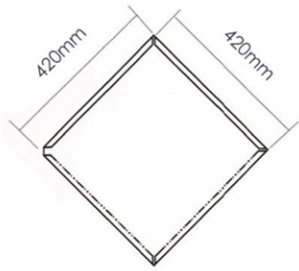
For Plywood connection to
purlins or tophat, for steel
(0.75mm BMT or greater)
-Tenn™ DX520

Accessories
-Tenn™ DX520

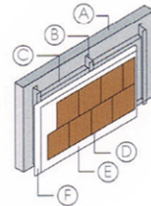
PRODUCT BENEFITS

- ▶ Trendy shingle profile in diamond shape or brick shape
- ▶ Ability to cover domes with curving shapes and sizes
- ▶ Aluminium/ Zinc alloy coating provides excellent corrosion resistance
- ▶ Infrared cured paint system for better paint performance and smoother surface finish

PROFILE



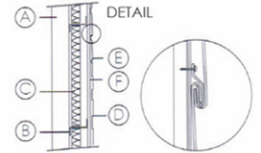
V-TYPE
(Diamond)



T-TYPE
(Rectangular)

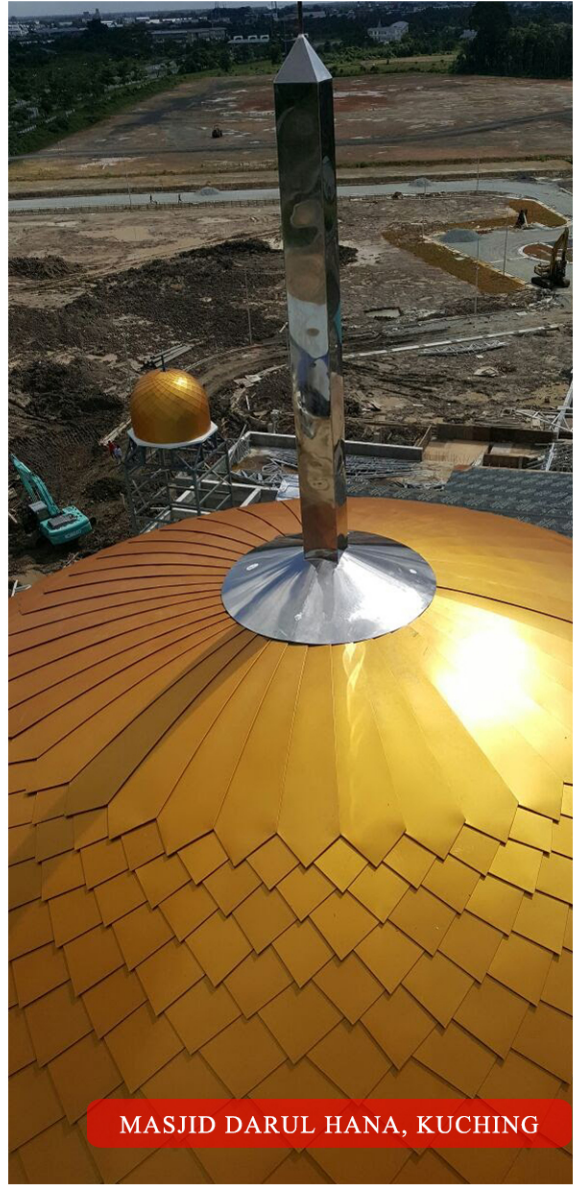
TYPICAL SECTION

- A = SUPPORTING STRUCTURE
- B = ZED FRAME
- C = INSULATION
- D = EUROSHINGLE™
- E = WATER PROOFING UNDERLAY
- F = WATER PROOFING PLYWOOD



SECTION





MASJID DARUL HANA, KUCHING



MASJID DARUL AQSA, KUCHING